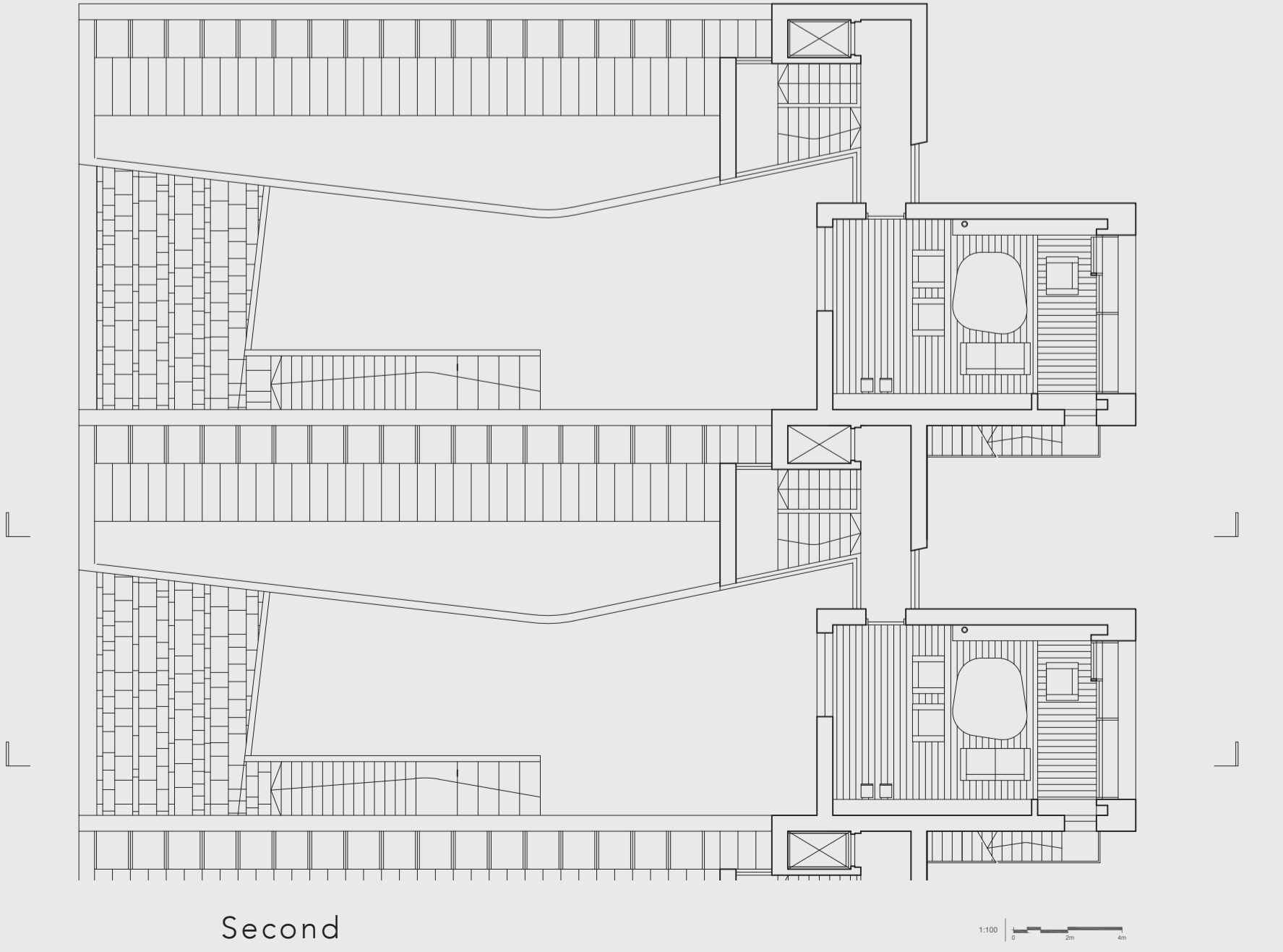
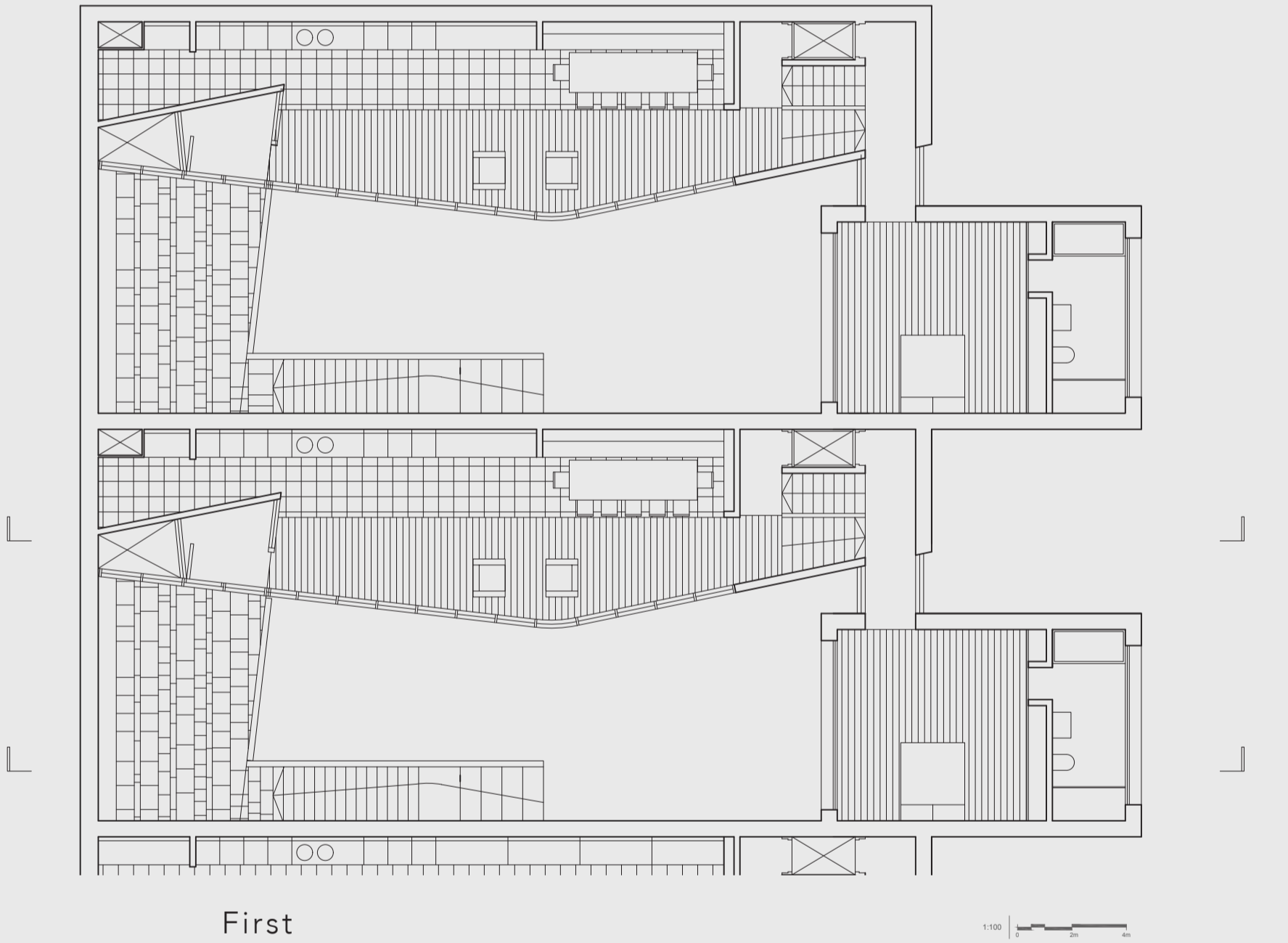
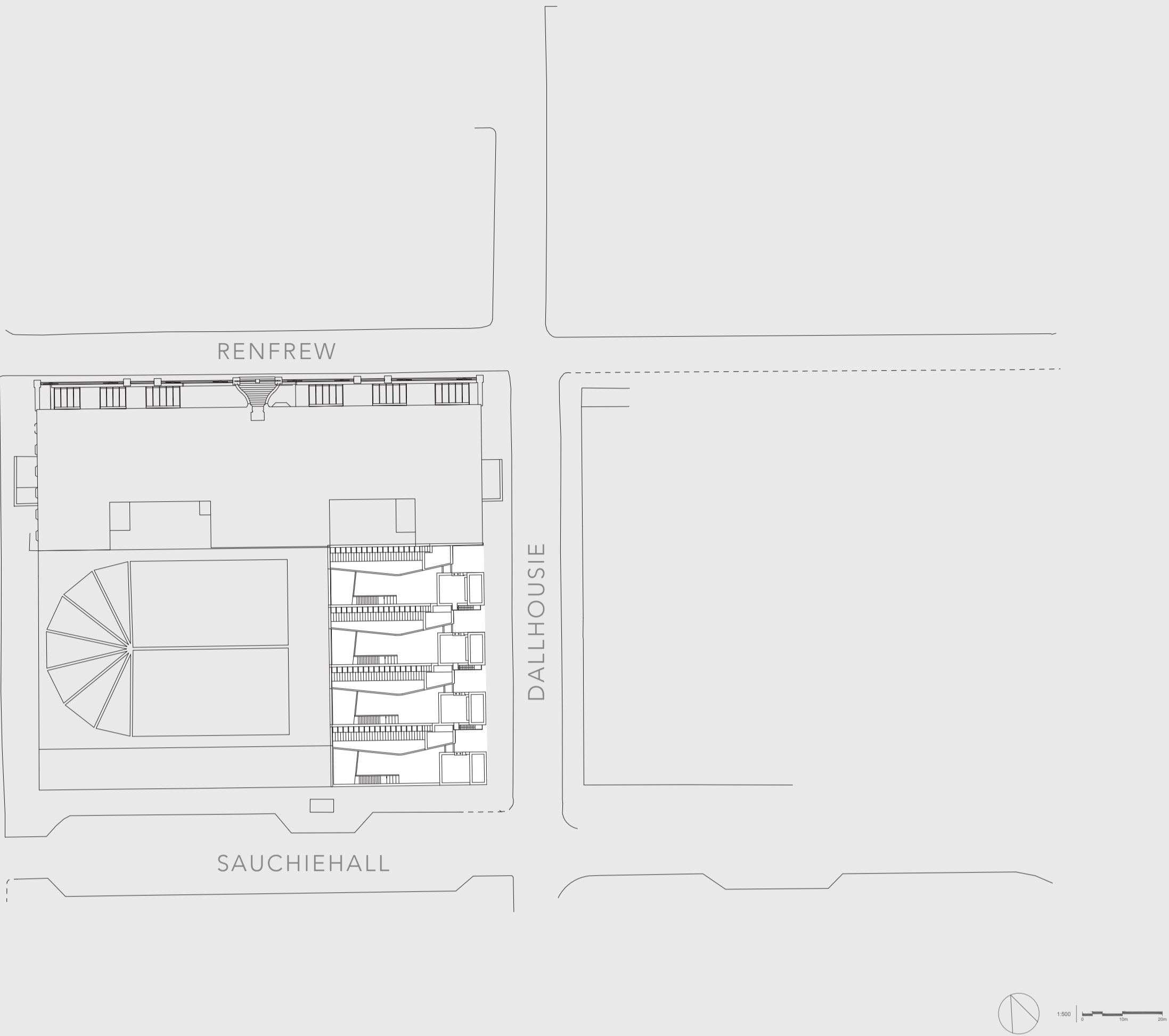


Kings City Artists  
A Town House for an Artist  
GDM 940202



Site



The house sits on a deep site under the Glasgow School of Art on the great slope of Dalhousie street. The house reveals itself through a journey through a series of spaces and rooms. The forecourt sits off the brae. It is public place to pause on the climb up the brae. A gallery is entered off the forecourt. It will show the work of the neighbouring artist and positively add activity to the street.

The route continues into a private courtyard at the end of which is the artist's studio. It can open up to the courtyard. To the north side is a bedroom. There is a secondary entrance, a shortcut but the formal route continues from the courtyard up a staircase to a balcony. There is a turn and then entry into the house turning again into an open plan kitchen dining living space to welcome the visitor.

The route continues up the stair, a half flight to reach the master bedroom or onward to reach the living room, a large space revealing the street again from above. There is a further climb, exterior, to a roof terrace that unfolds the glorious south elevation of the Art school.

The house will keep you fit but there is a hoist if it is too much of a climb. The elevations to the living room wing will be built from sandstone to match the Art School. The elevations to the courtyard will be of white glazed brick. Windows and doors will be of oak. The roof zinc.



Daily Recor Building

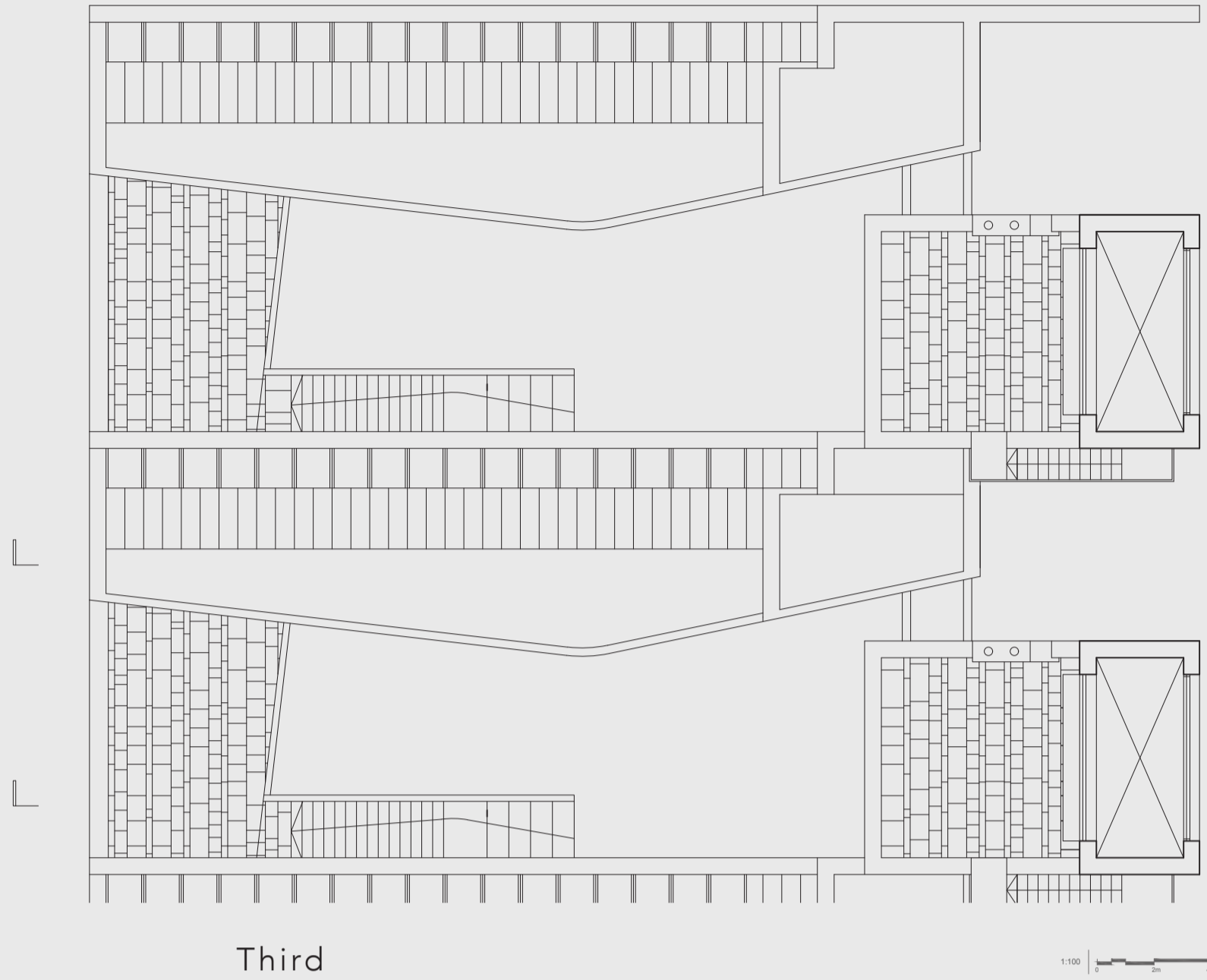


Hill House

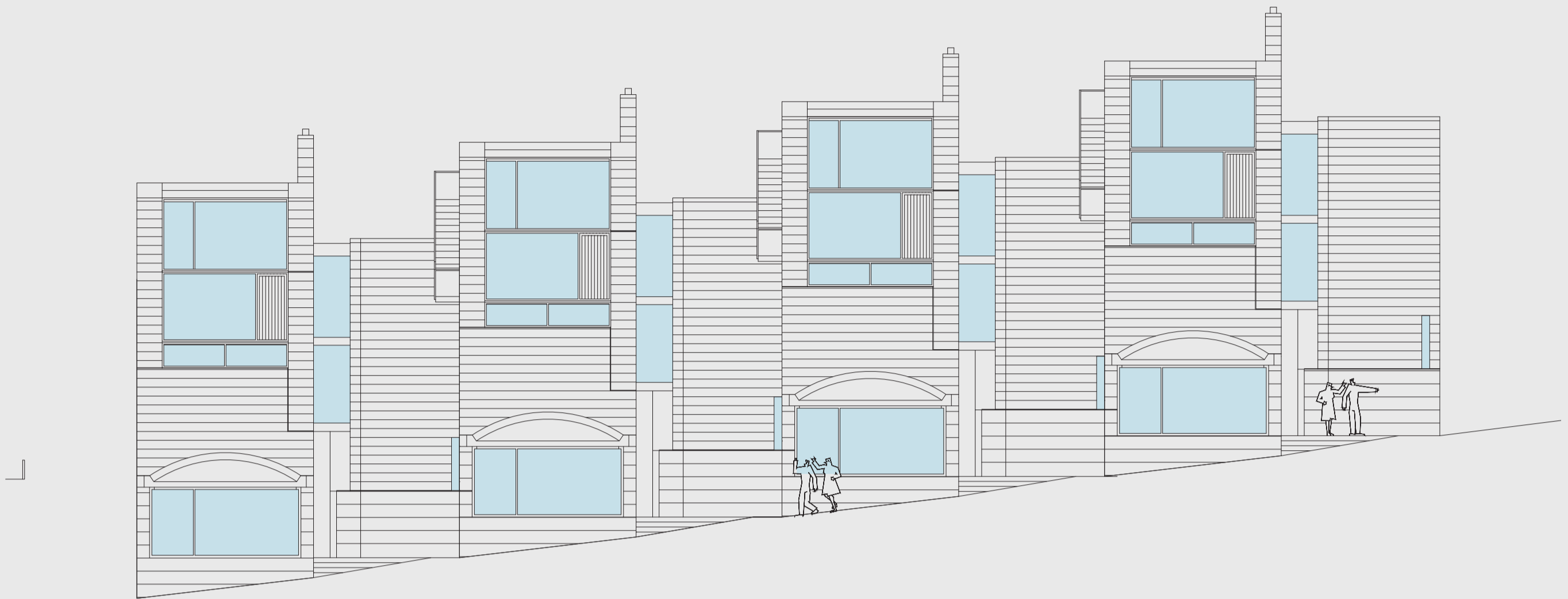


Daily Recor Building

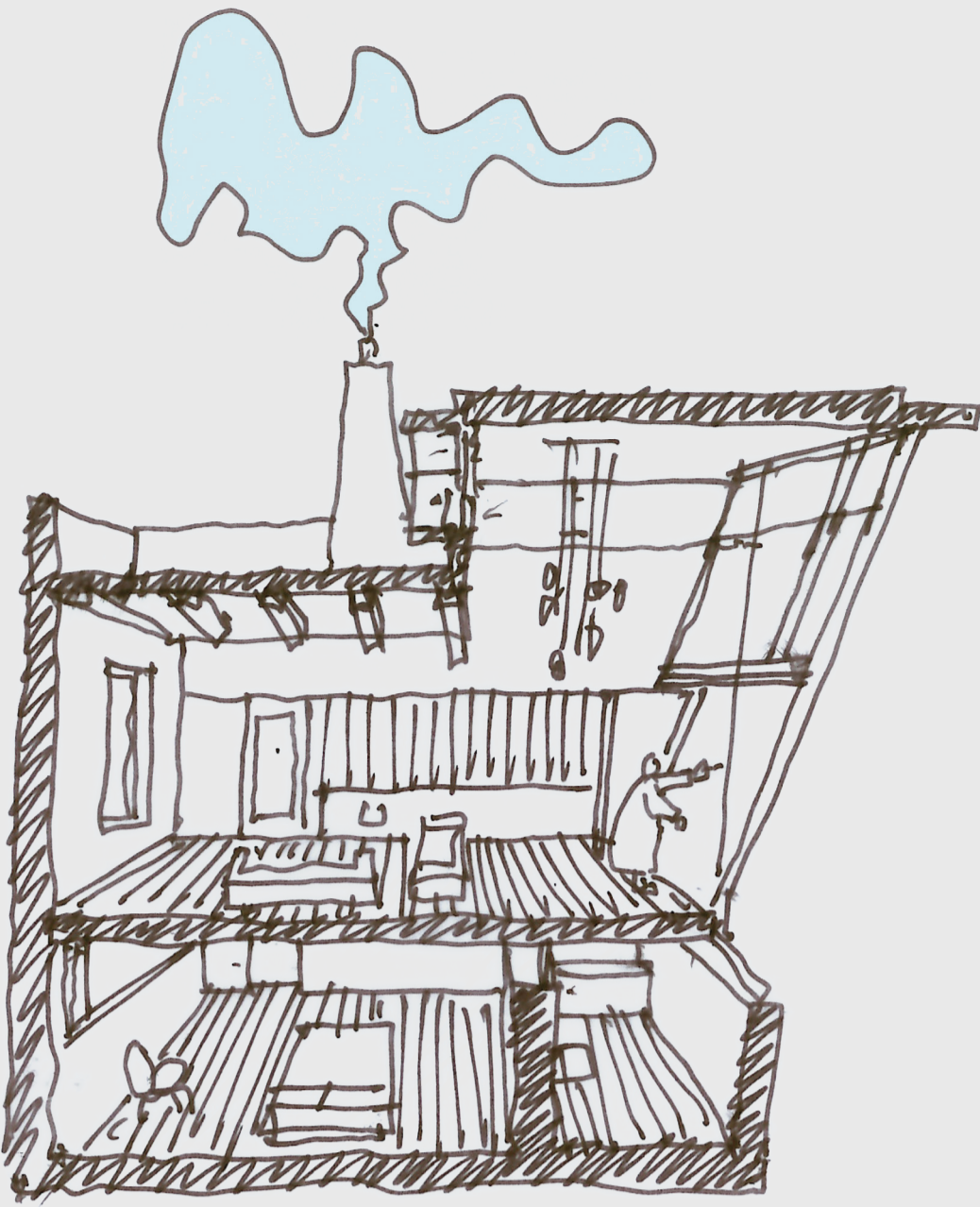
Kings City Artists  
A Town House for an Artist  
GDM 940202



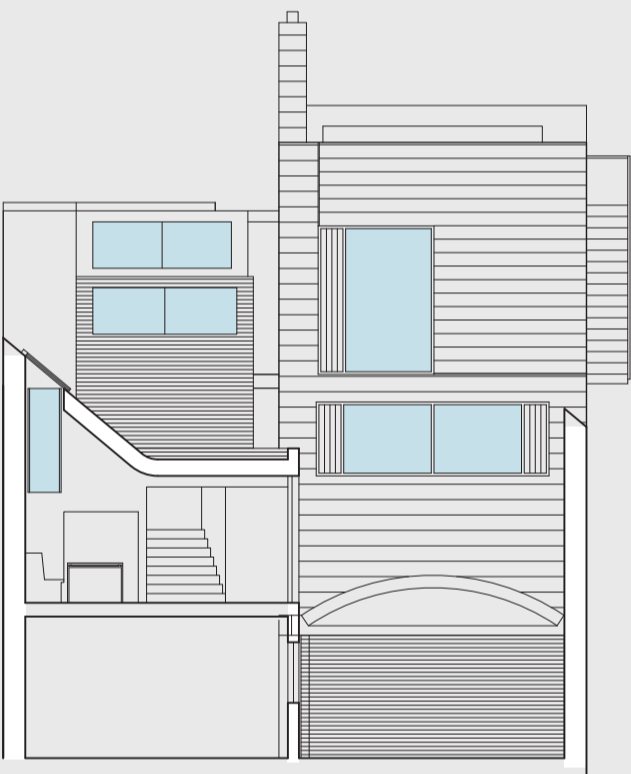
Third



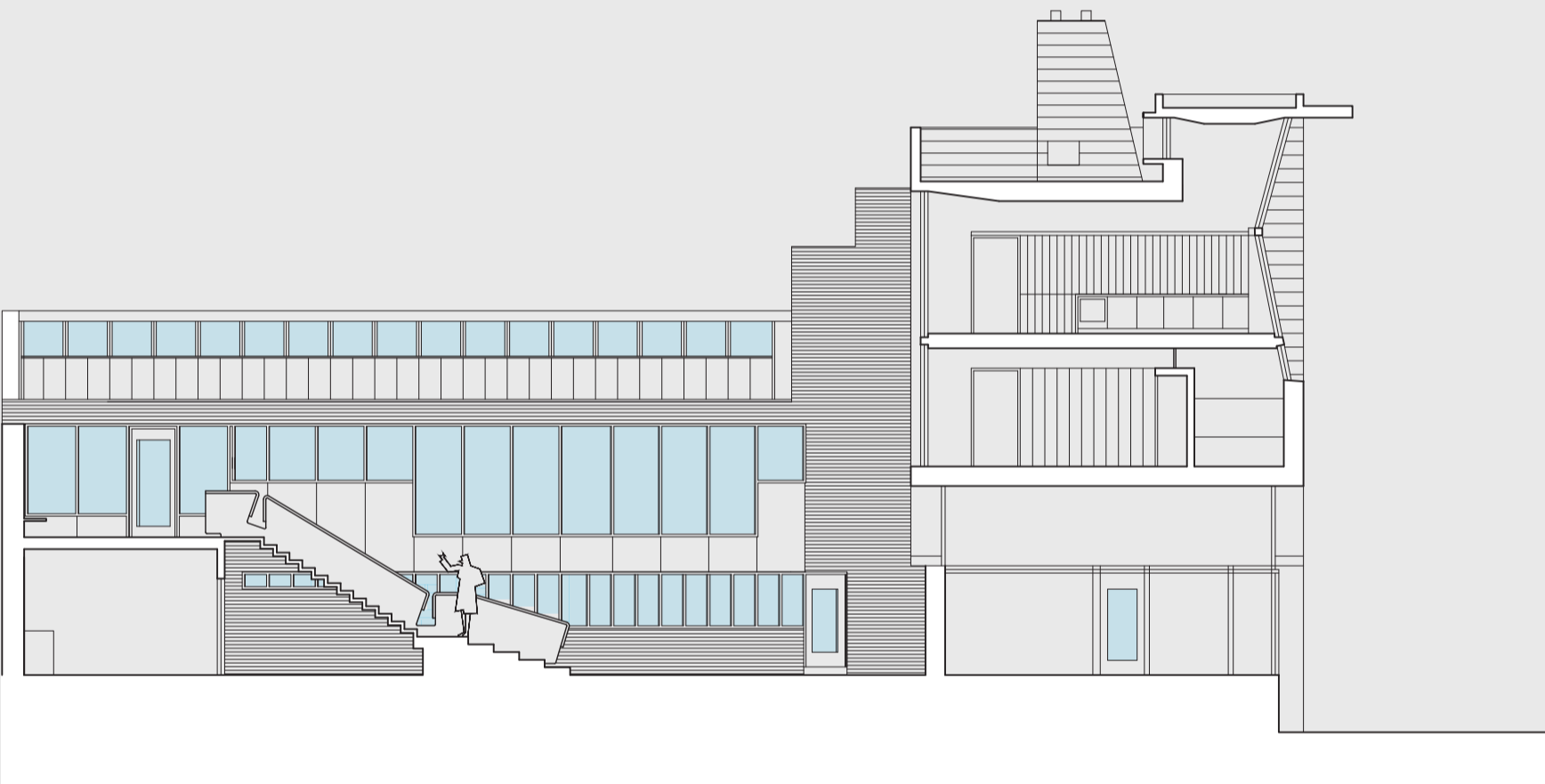
Long Elevation



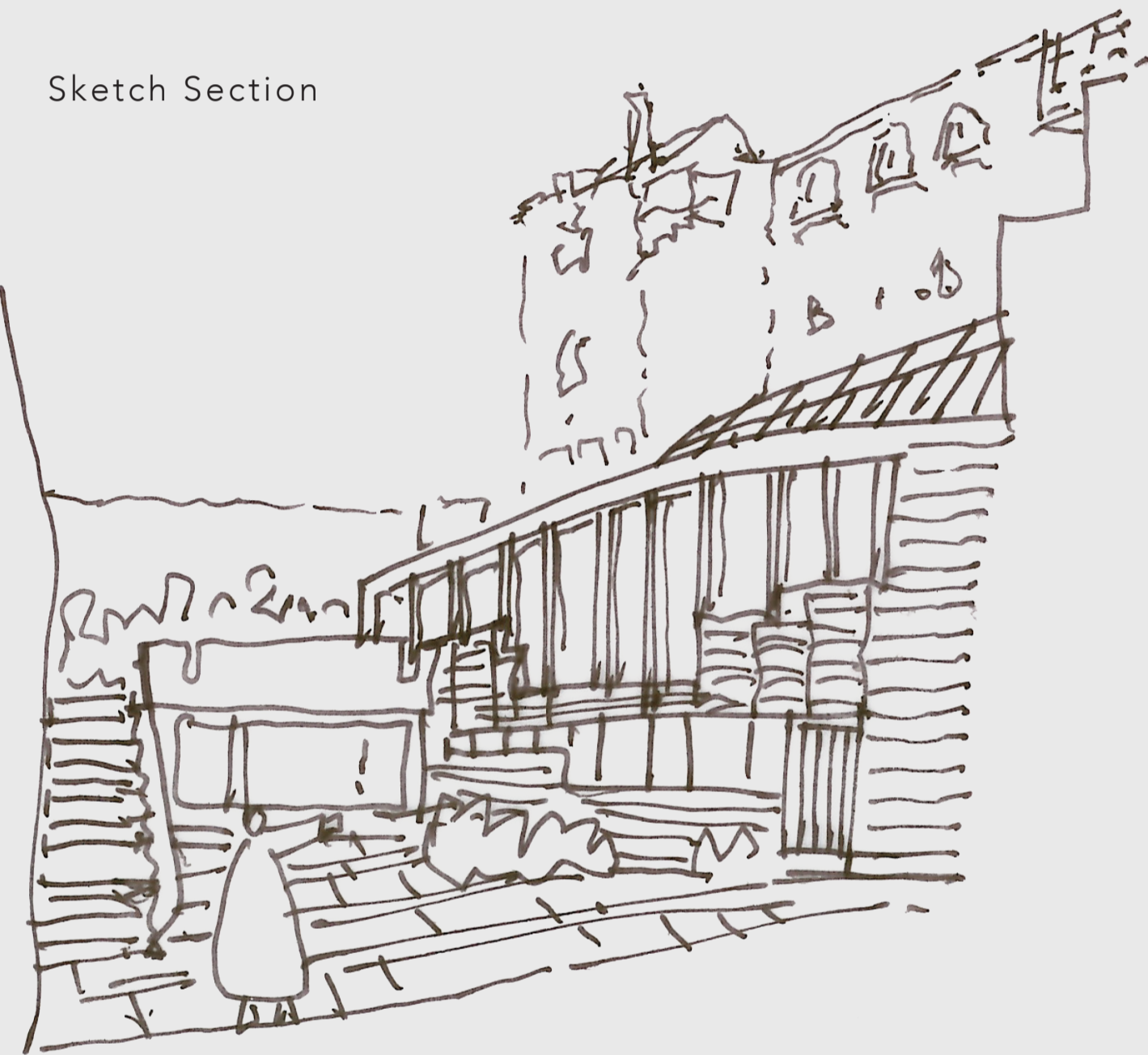
Sketch Section



Short Section



Long Section



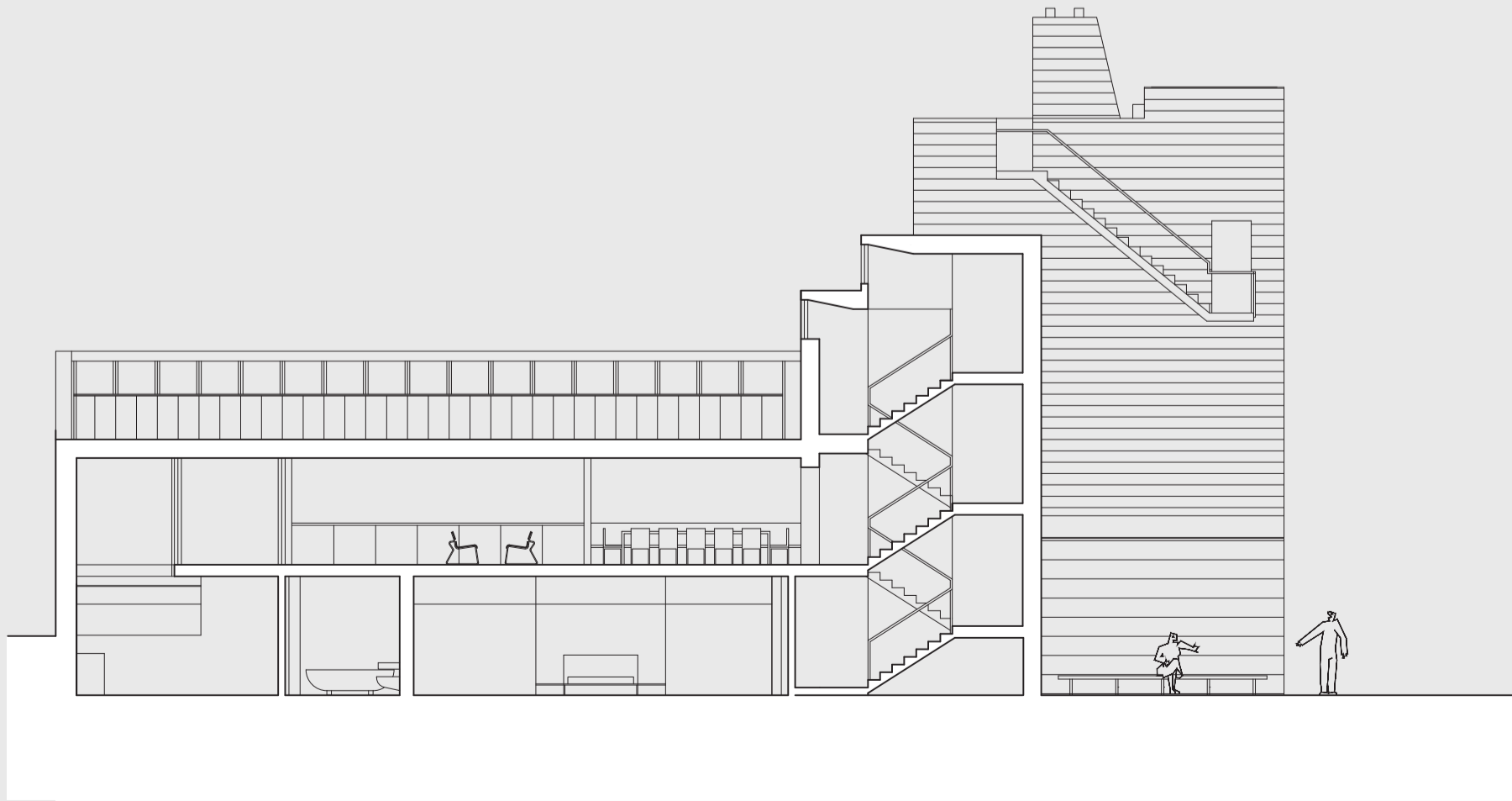
View into back courtyard



Front Elevation



Short Elevation



Long Section

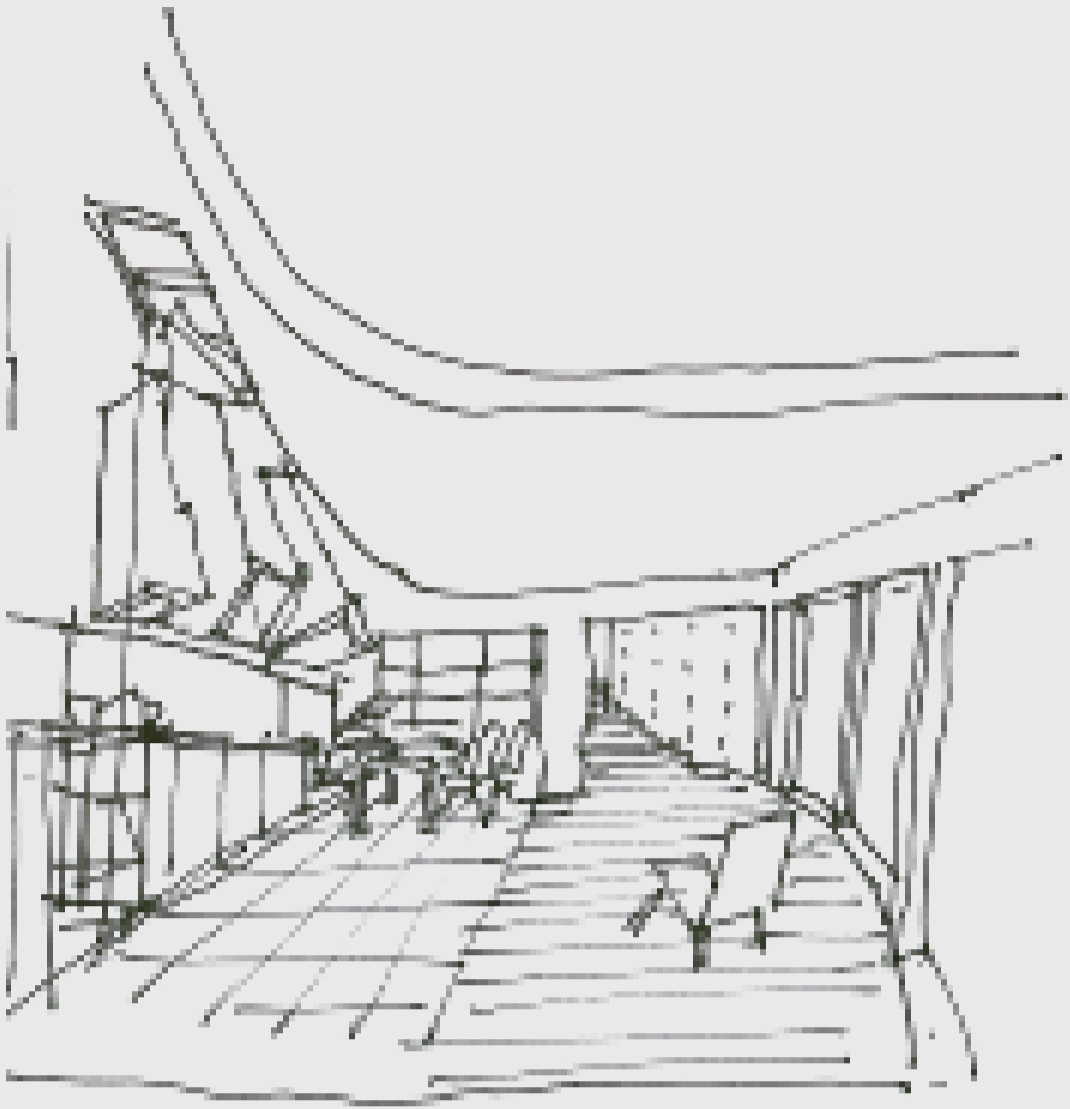
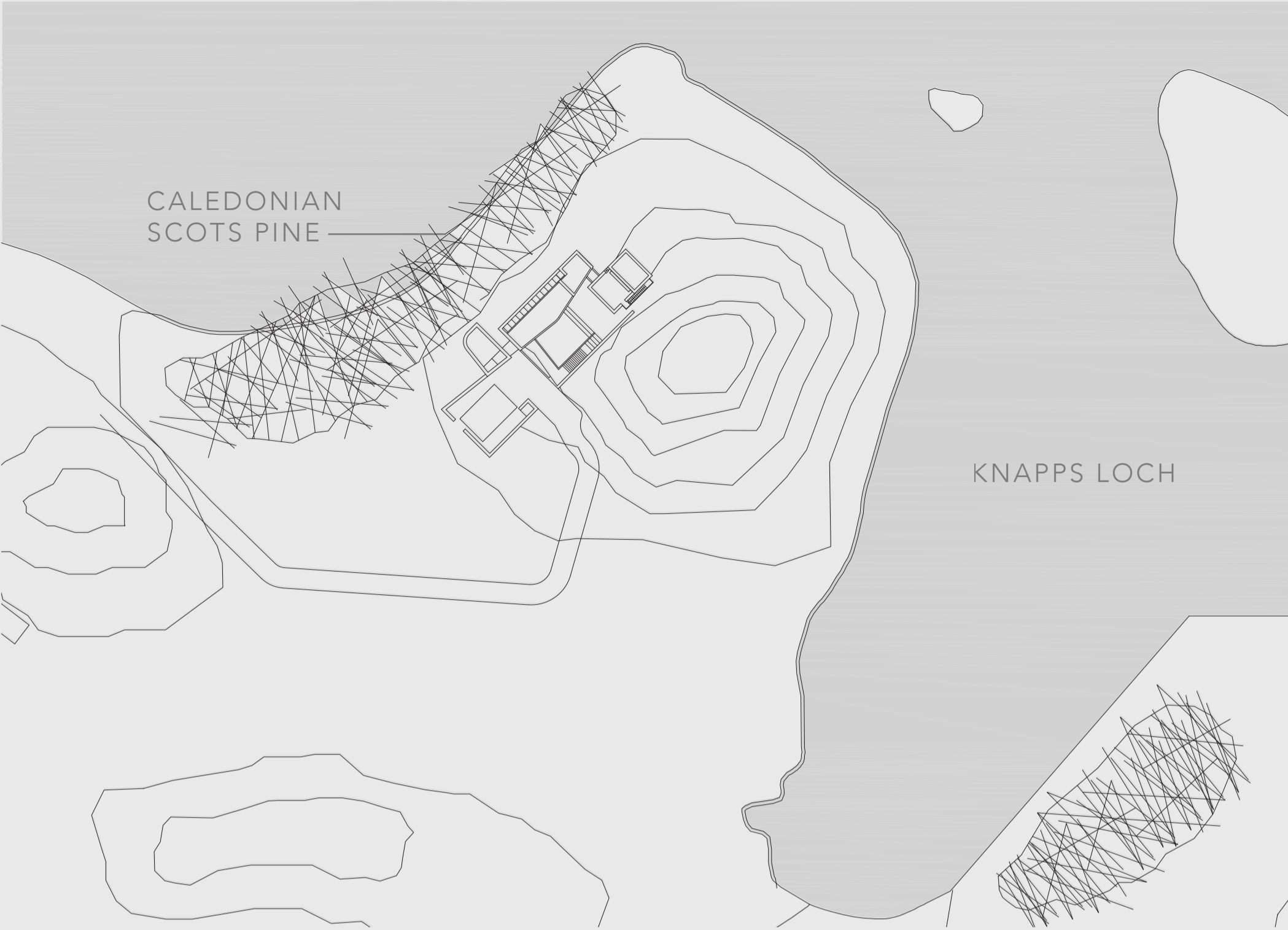


View of front entrance

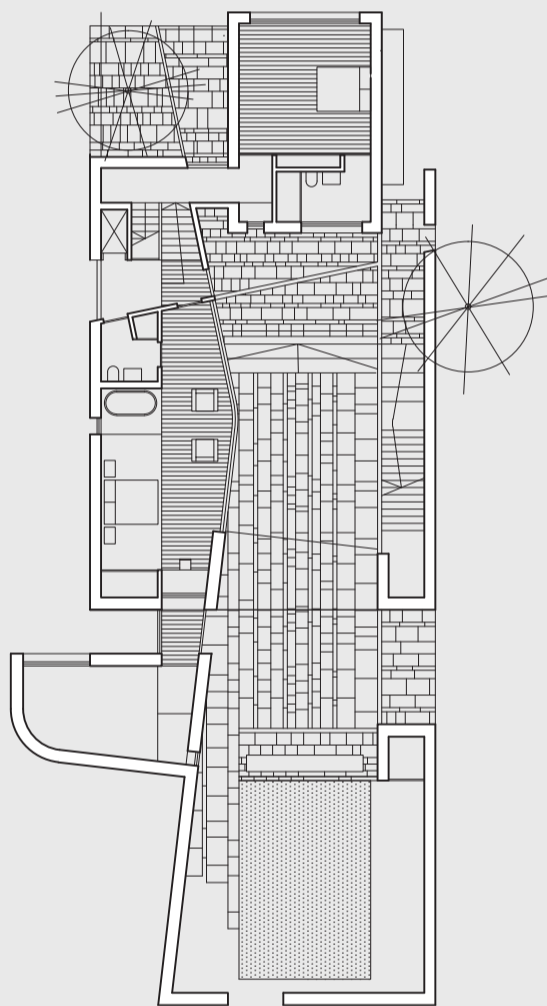
Kings City Artists  
Country House for an Artist  
GDM 940202

The house sits on the edge of the small brae between it and the copse of Scots pines and facing the loch. The idea is to hide the view of the loch as the visitor approaches the building. The threshold is a forecourt. The artist's studio is entered off this space. The artist must go out of the house to go to the studio. There is a secondary entrance, a shortcut if it is raining but the formal route continues from the courtyard up the staircase turning again onto a bridge.

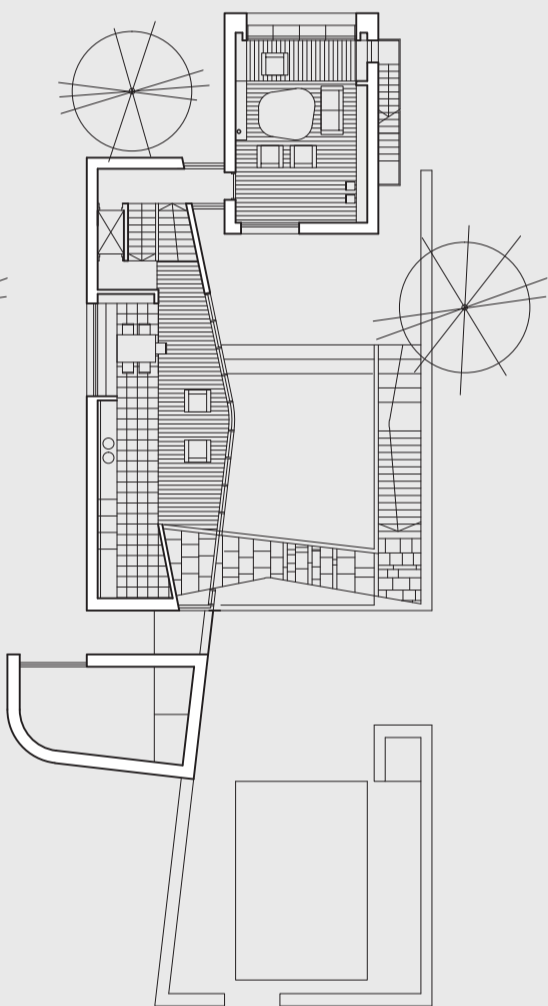
There is a turn again and then entry into the house into an open plan kitchen dining living space to welcome the visitor. The route continues up the stair, a half flight to reach the living room, a large space revealing the loch again from above. There is a further climb, exterior, to a roof terrace that has views to the south. The ground floor of the house has a master bedroom and up a half landing is a second bedroom, The elevations to the house will be roughcast with sandstone features. Windows and doors will be of oak. The roof sill be zinc.



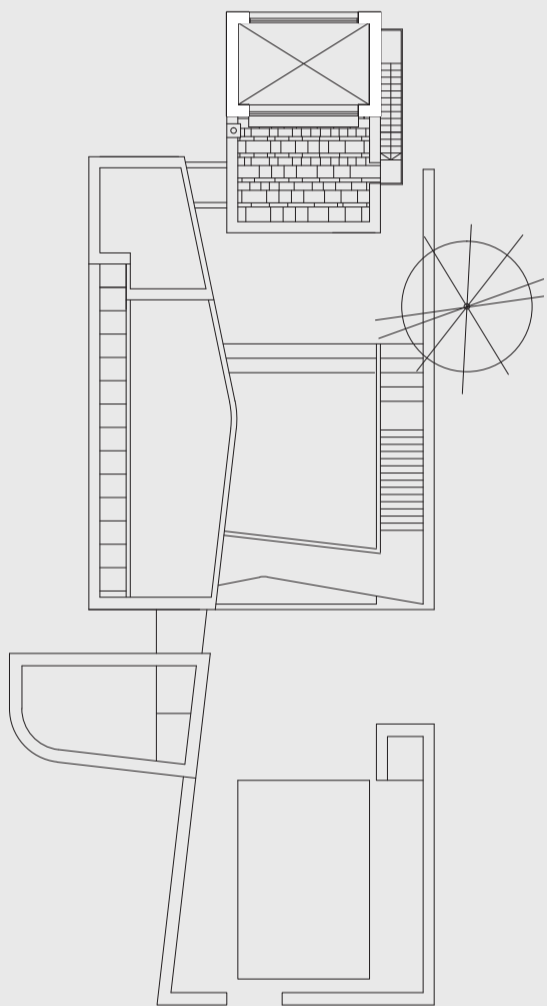
Site



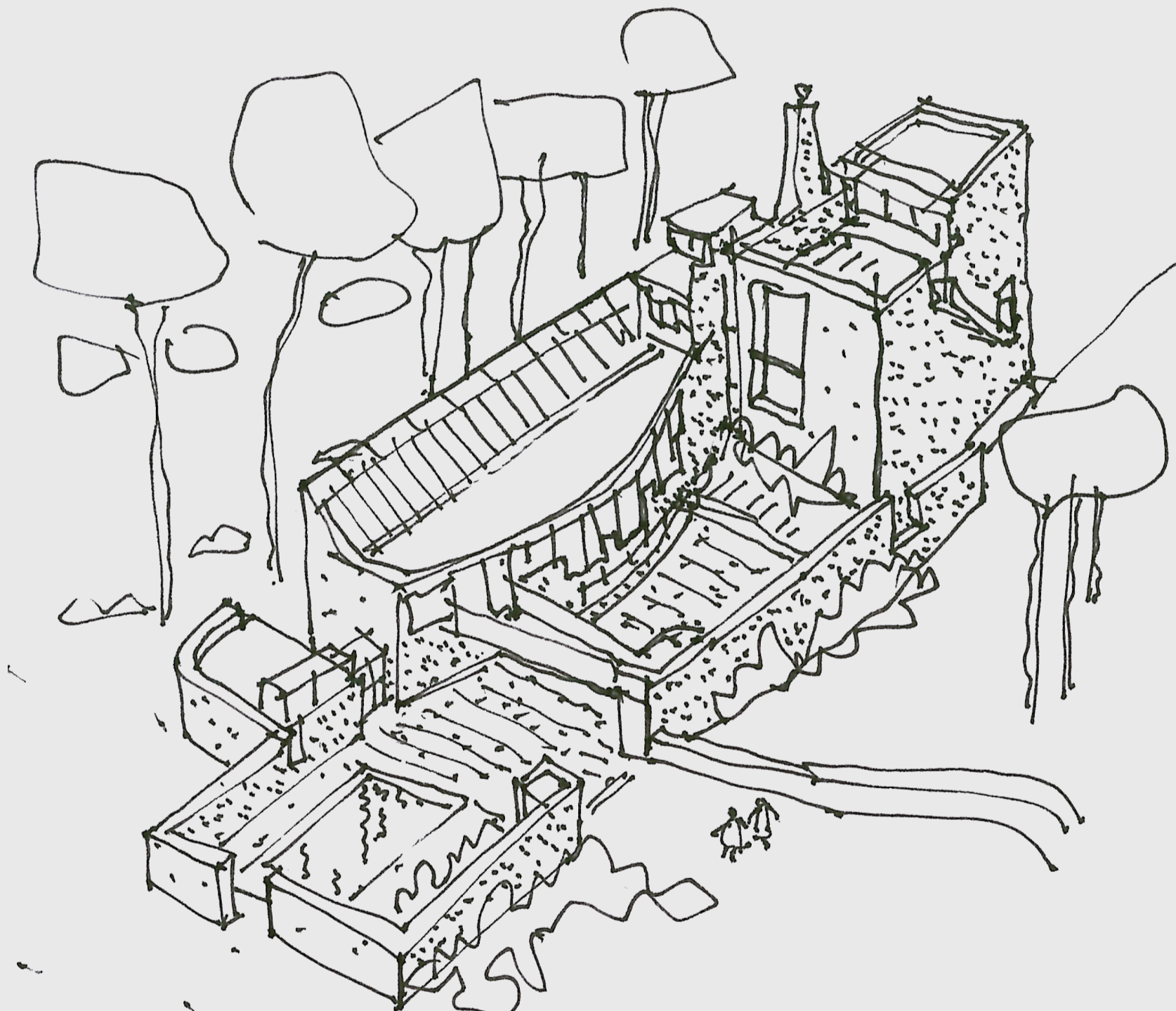
Ground



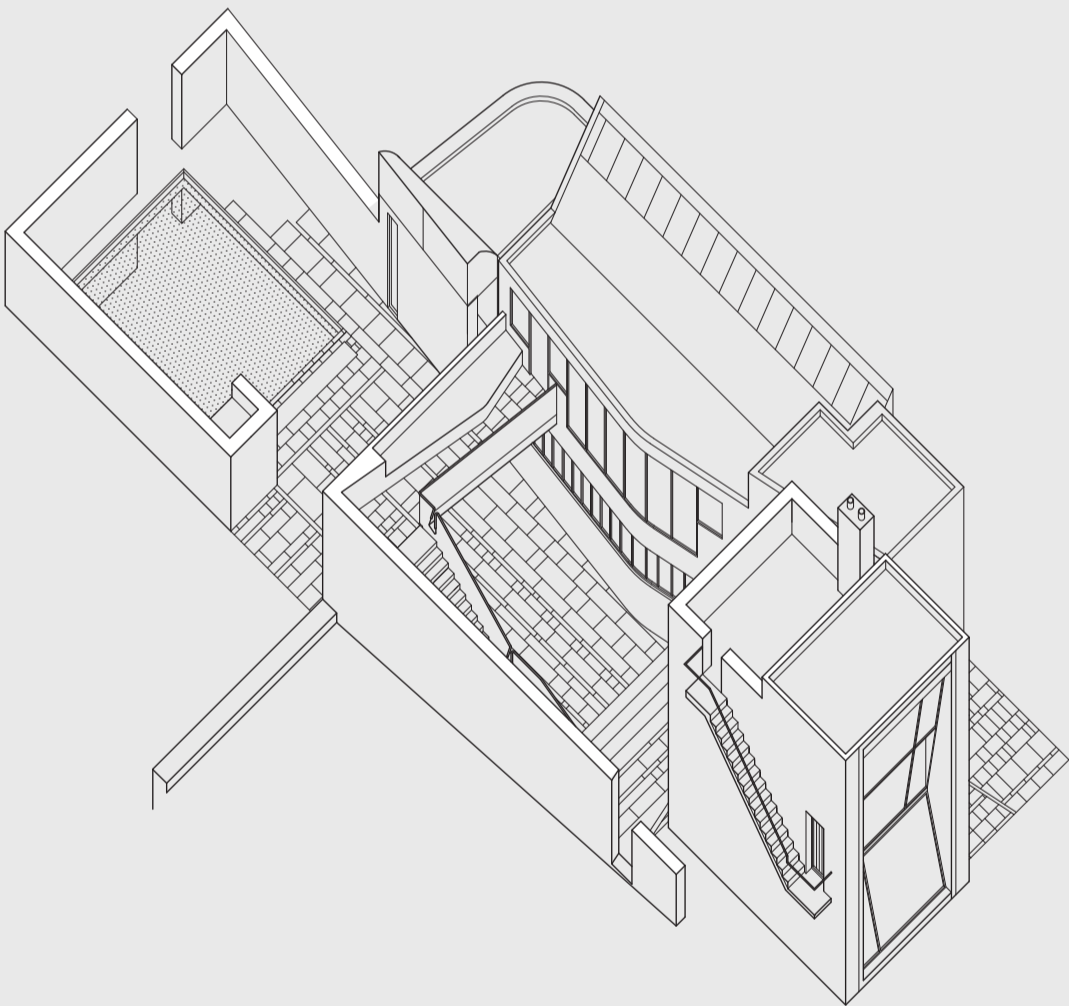
First



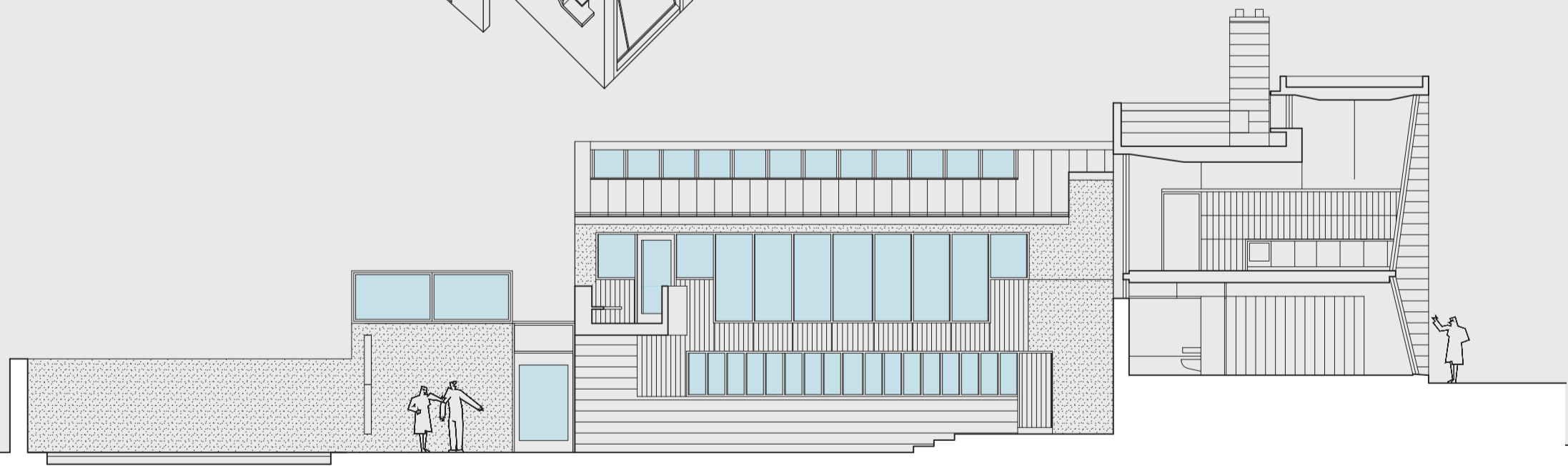
Second



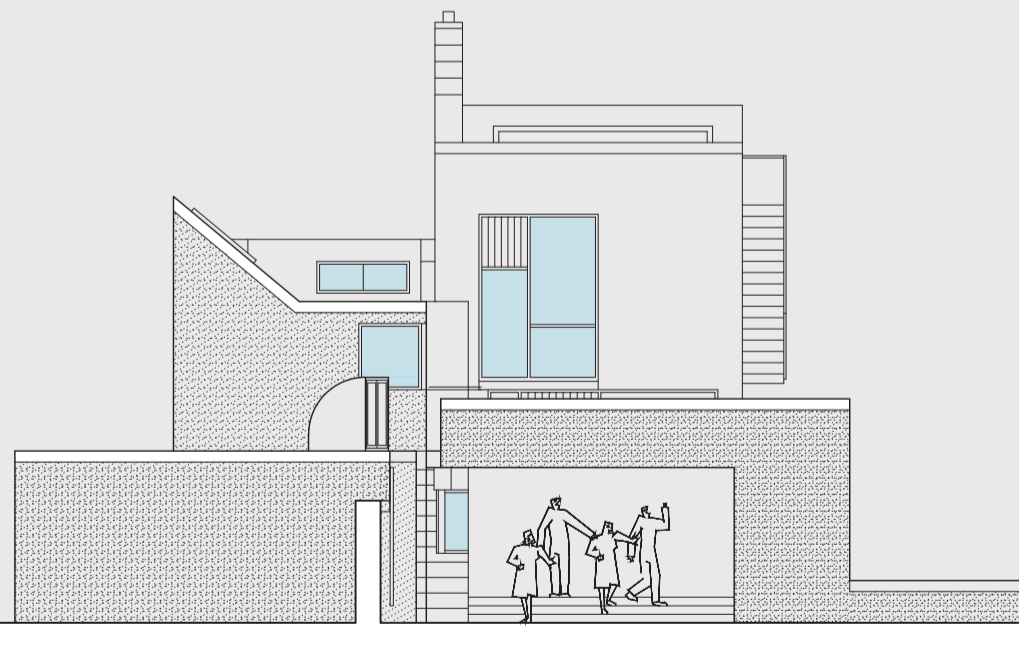
Axo



Long Section



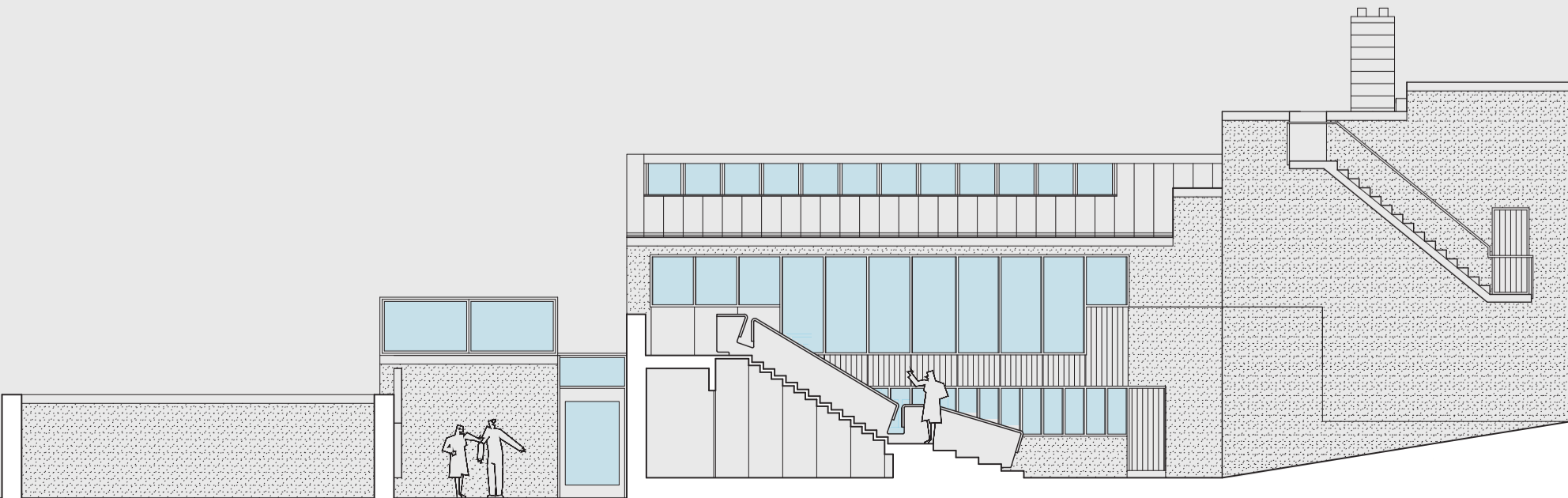
Short Section



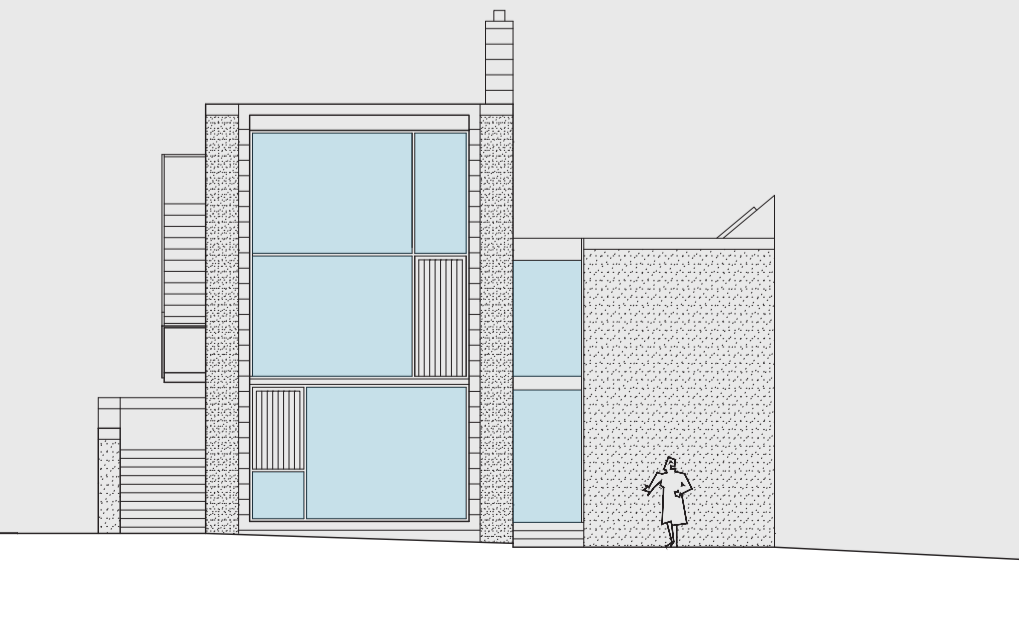
Long Elavation



Long Section



Short Section



Long Elavation

